



## Martin Close, Uxbridge, UB10 0SJ

- EPC Rating - B
- Furnished
- Balcony
- First Floor
- Two Bathrooms
- Two Double Bedrooms
- 1 Parking Space
- Well Presented
- Students Welcome
- Council - C

**£1,725 PCM**

Cameron Estate Agents  
195 High Street,  
Middlesex, Uxbridge, UB8 1LB

E: [uxbridge@cameron.co](mailto:uxbridge@cameron.co)  
T: 01895252000

[www.cameron.co](http://www.cameron.co)



Whilst every care has been taken to ensure the accuracy of these particulars, none of the statements contained herein are to be relied upon as representations of fact. These particulars do not constitute an offer or contract.

**Description**

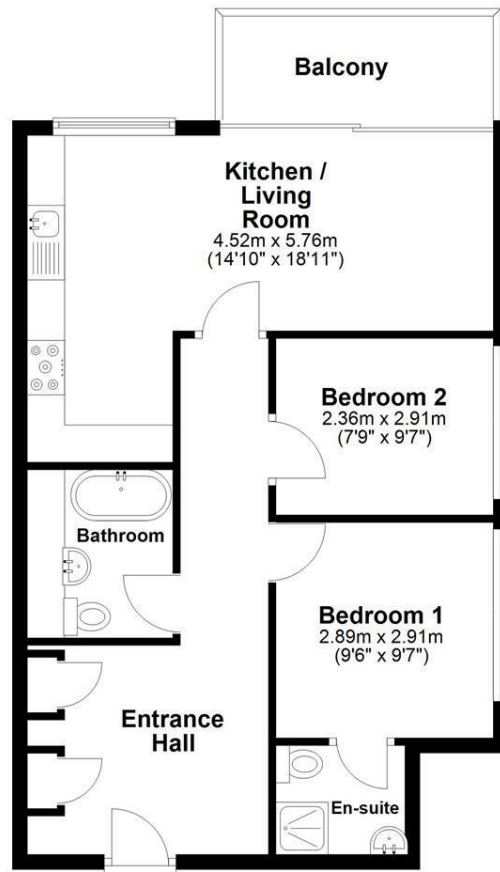
Cameron offer to the market this well presented two double bedroom, two bathroom apartment. Located on the first floor, the accommodation comprises entrance hall, living room, kitchen/breakfast room, two double bedrooms (master with en-suite shower room) and family bathroom. The property benefits from balcony, double glazing, gas central heating, allocated parking and landscaped communal gardens. Ideally located within walking distance to Uxbridge town centre with its range of day to day shops, bars, restaurants and Uxbridge Station - Available early November 2025, presented furnished and includes parking. Also within easy reach of fantastic local schooling.

**IMPORTANT NOTICE**

These particulars have been prepared upon information supplied by the Vendor and should be verified by your surveyors and solicitors. In accordance with the Property Misdescriptions Act 1991 we have prepared these sales particulars as a general guide to give a broad description of the property. They are not intended to constitute part of an offer or contract. We have not carried out a structural survey and the services, appliances and specific fittings have not been tested. All photographs, measurements, floor plans and distances referred to are given as a guide only and should not be relied upon for the purchase of carpets or any other fixtures or fittings. Lease details service charge and ground rent (where applicable) are given as a guide only and should be checked and confirmed by your solicitor prior to exchange of contract

## First Floor

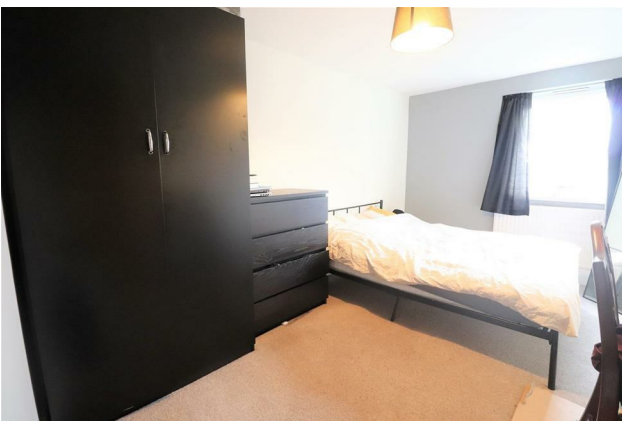
Approx. 56.9 sq. metres (613.0 sq. feet)



Total area: approx. 56.9 sq. metres (613.0 sq. feet)



# Cameron



Whilst every care has been taken to ensure the accuracy of these particulars, none of the statements contained herein are to be relied upon as representations of fact. These particulars do not constitute an offer or contract.